

419 Lafayette

LOFT + ROOFTOP

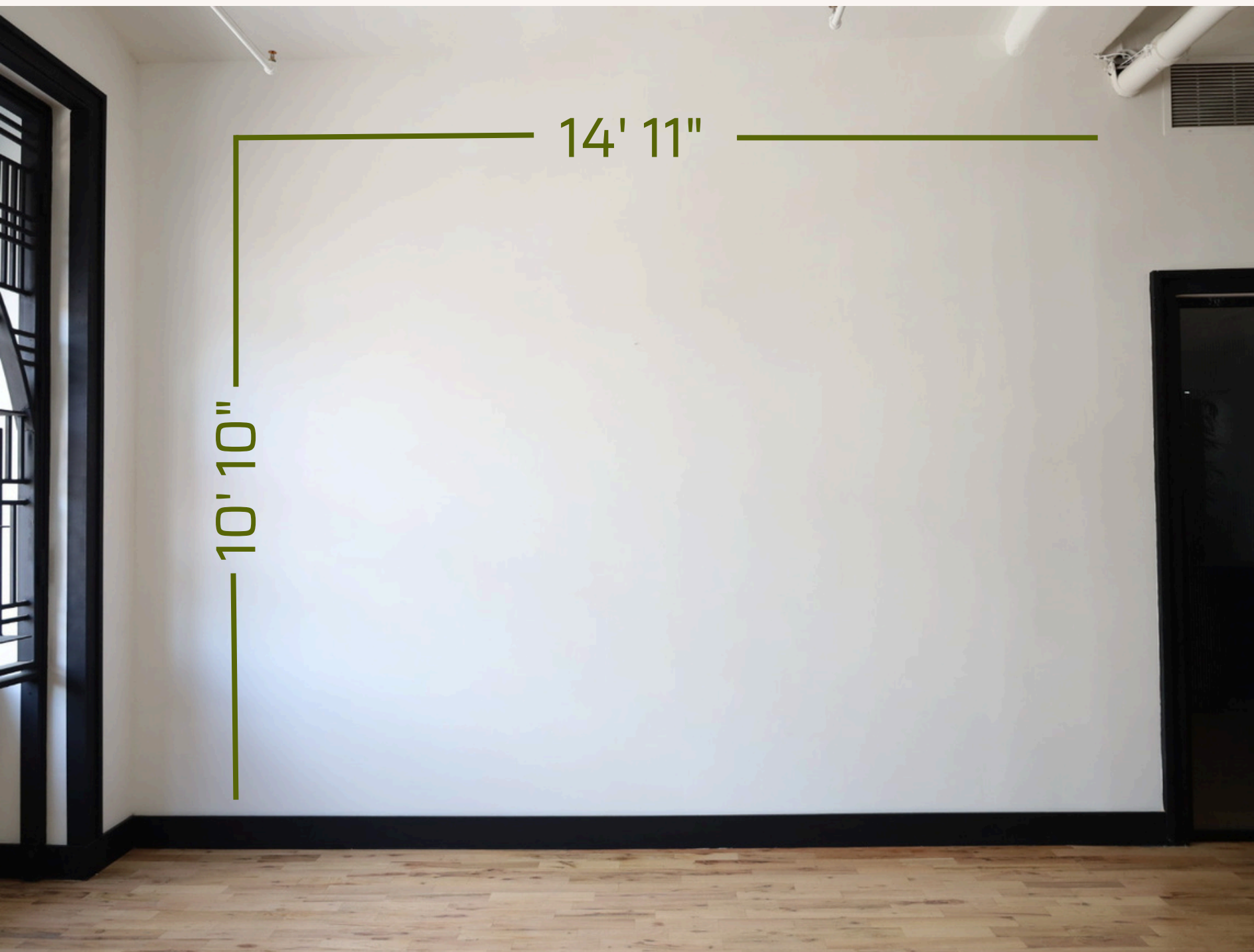
BRANDING MEASUREMENT BOOK



Double Glass Doors at Public Entry
*Branding in this area is subject to approval from the venue, based on the day of the event.

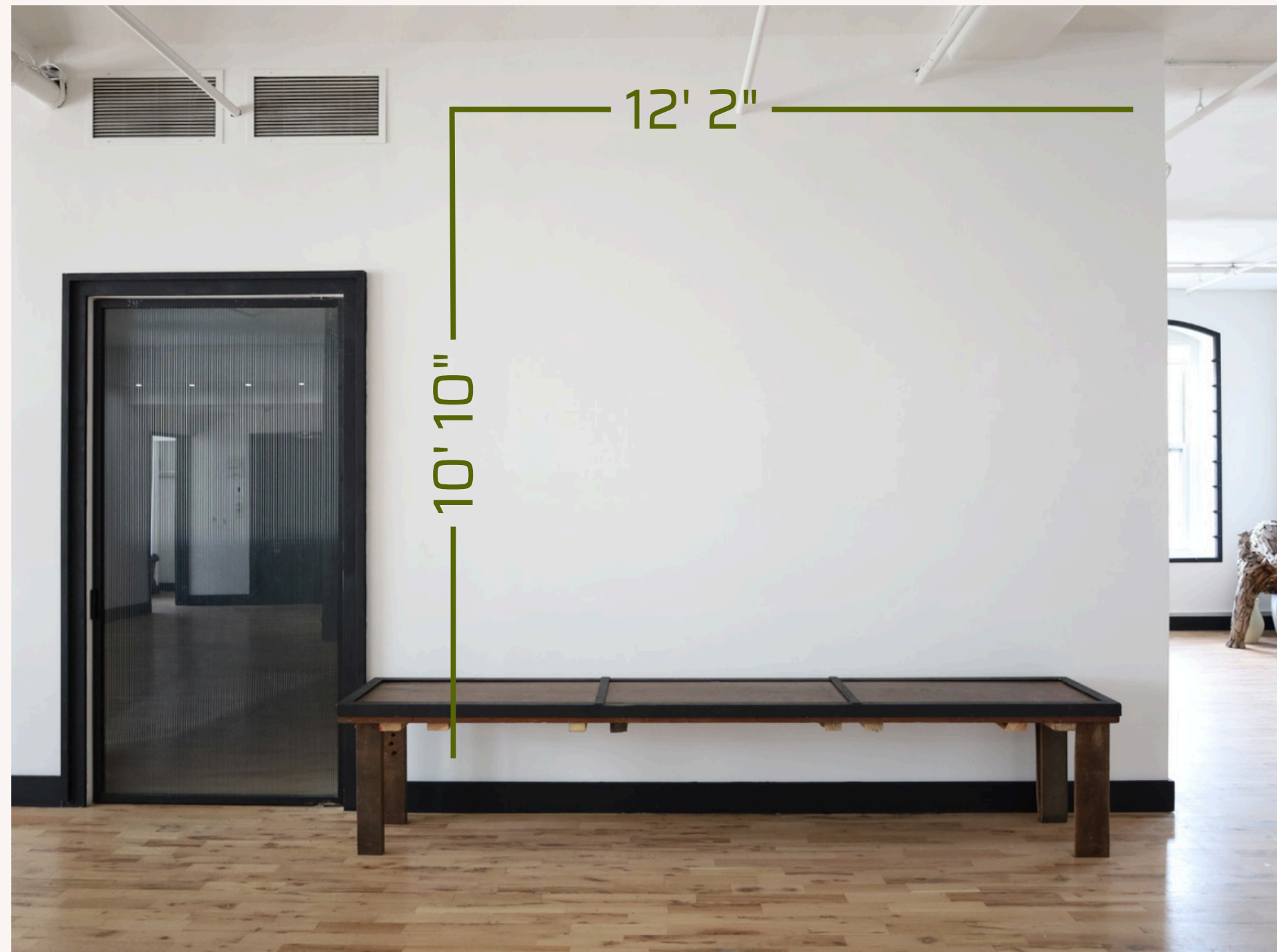


Glass Windows in Front of Freight Elevator



Wall Across from Public Elevator

Wall to Left Upon Entry from Freight Elevator

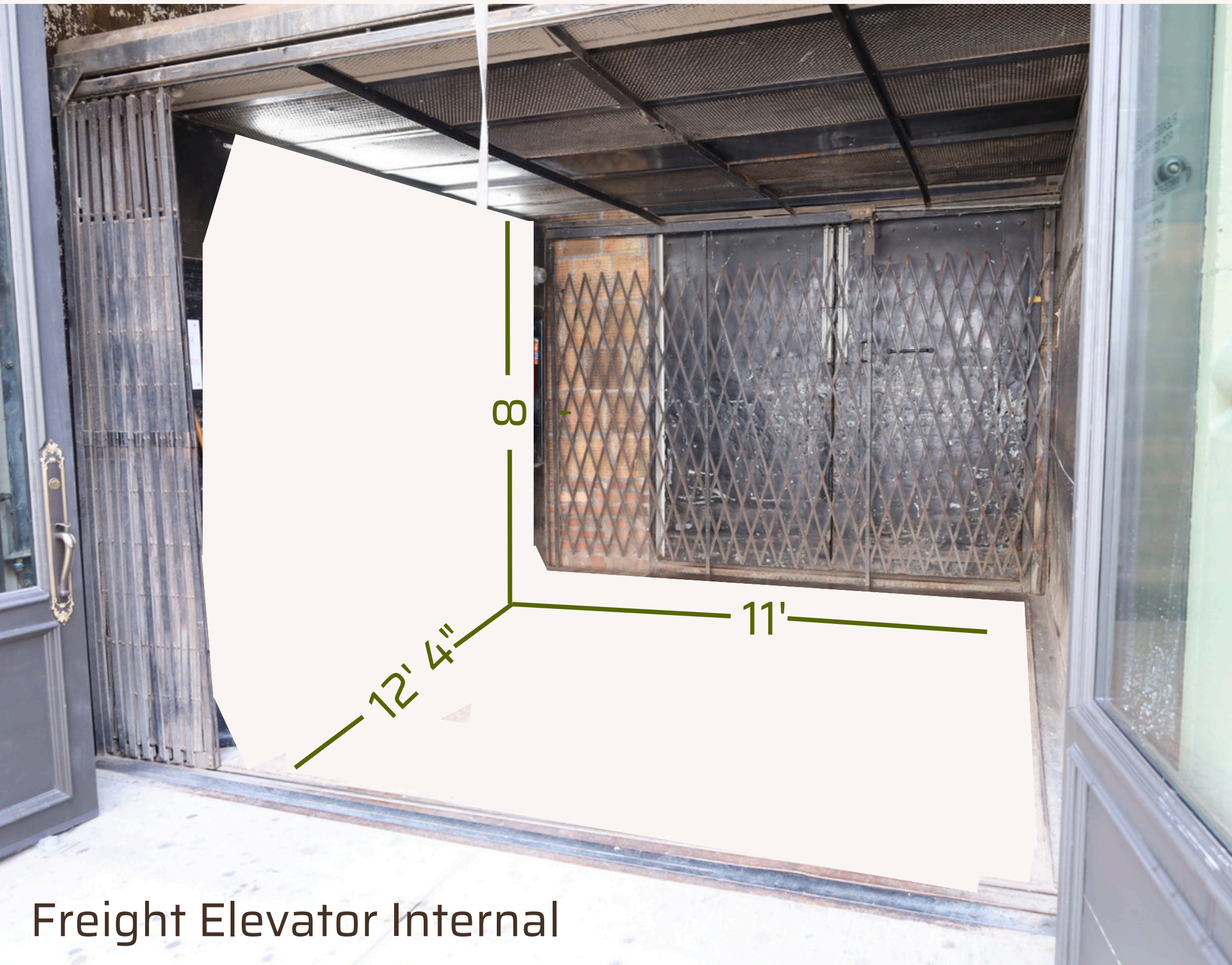




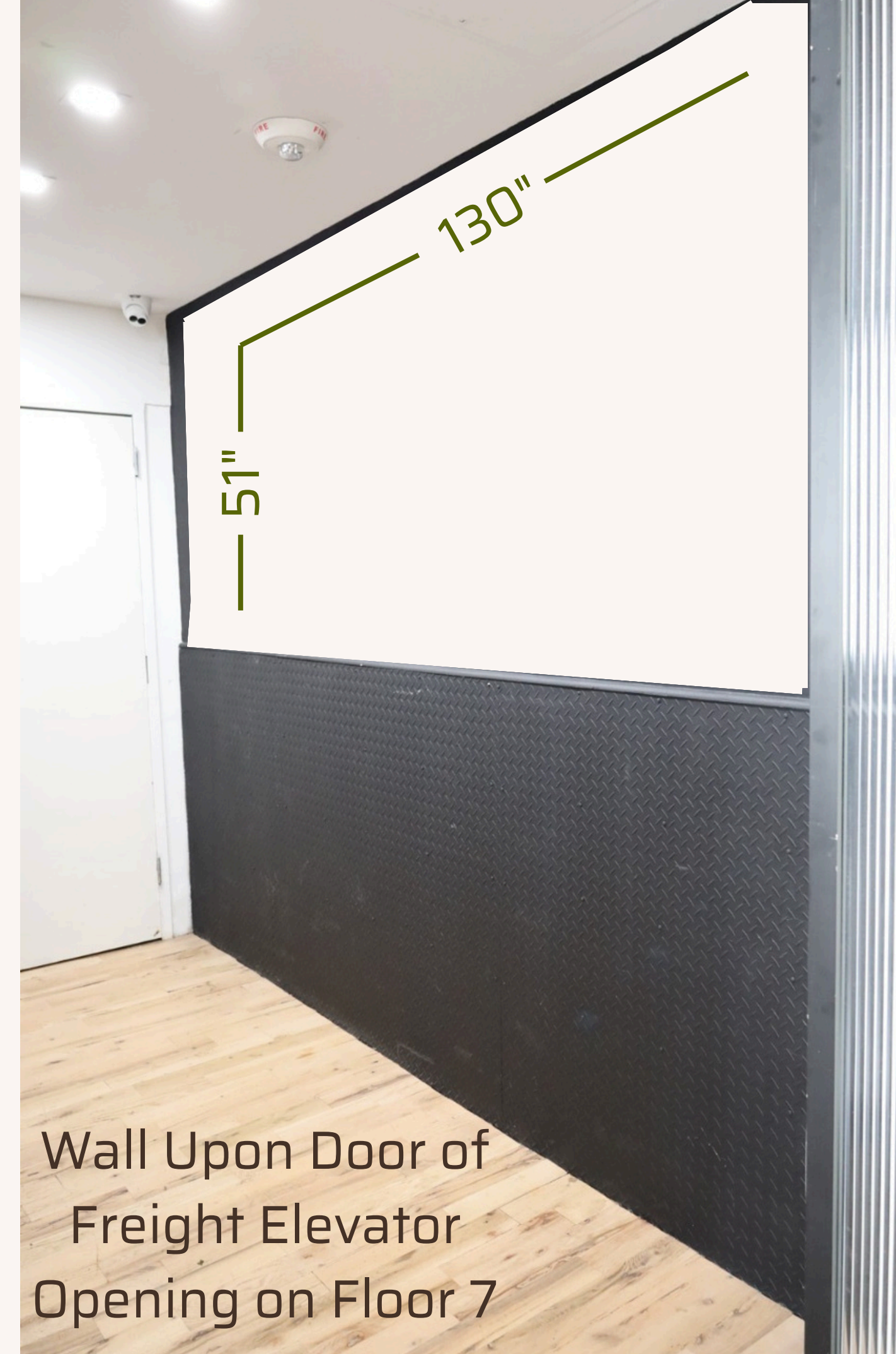
8.5'

41.2'

Wall Adjacent to Bar
(South Side of Room)
Immersive Projections Available



Freight Elevator Internal



Wall Upon Door of
Freight Elevator
Opening on Floor 7



Mobile Bars: (On Rolling Castors)

Size: 65 1/2" x 32 1/2" - Quantity: 2

Size: 63 3/4" x 28 1/2" - Quantity: 2

Mobile Walls: (Double Sided)

Quantity: 2



Quantity: 2

Quantity: 4

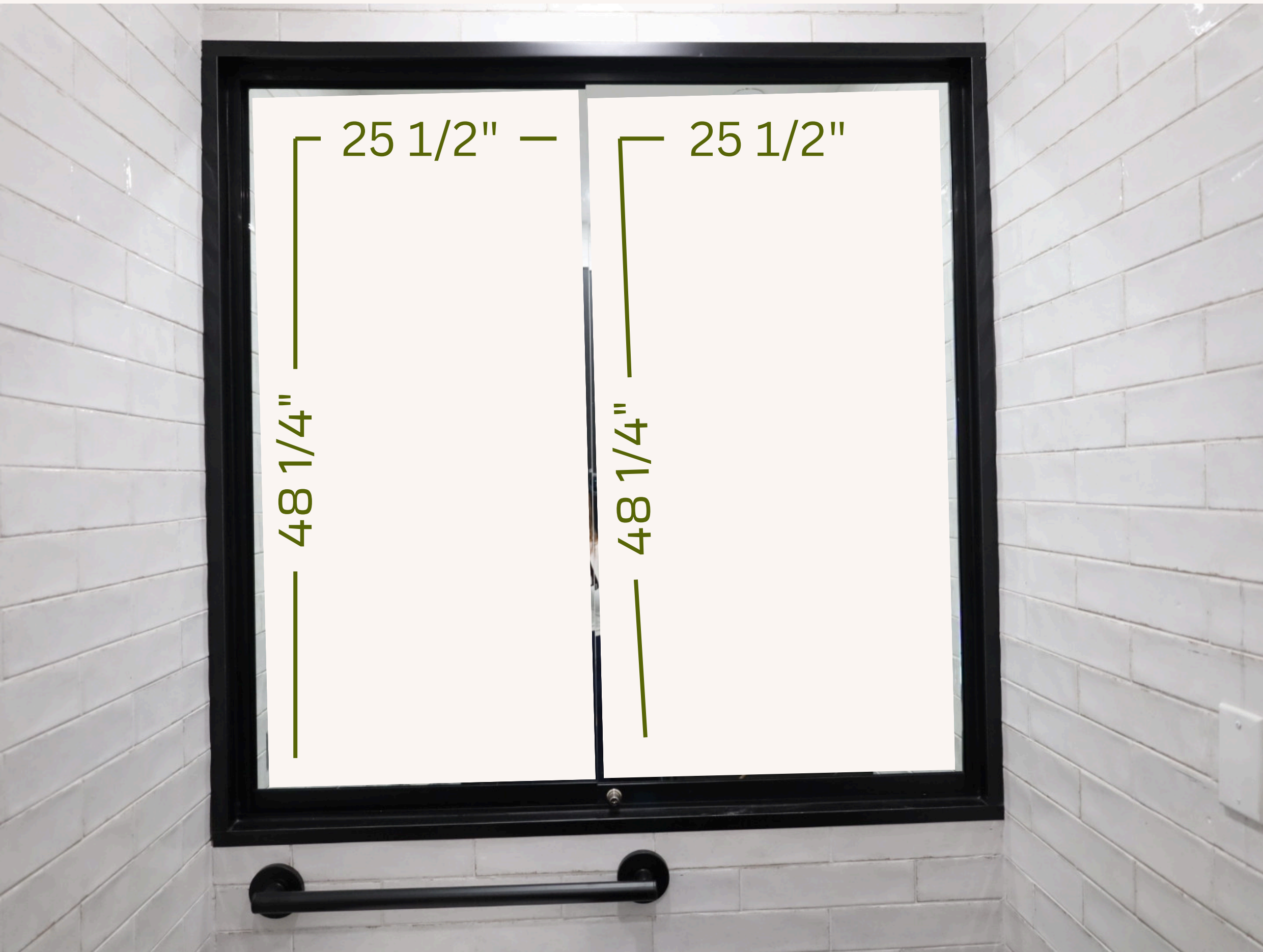


For all windows,
measurements are for
the individual panels
of glass
(2 per window)

Quantity: 4

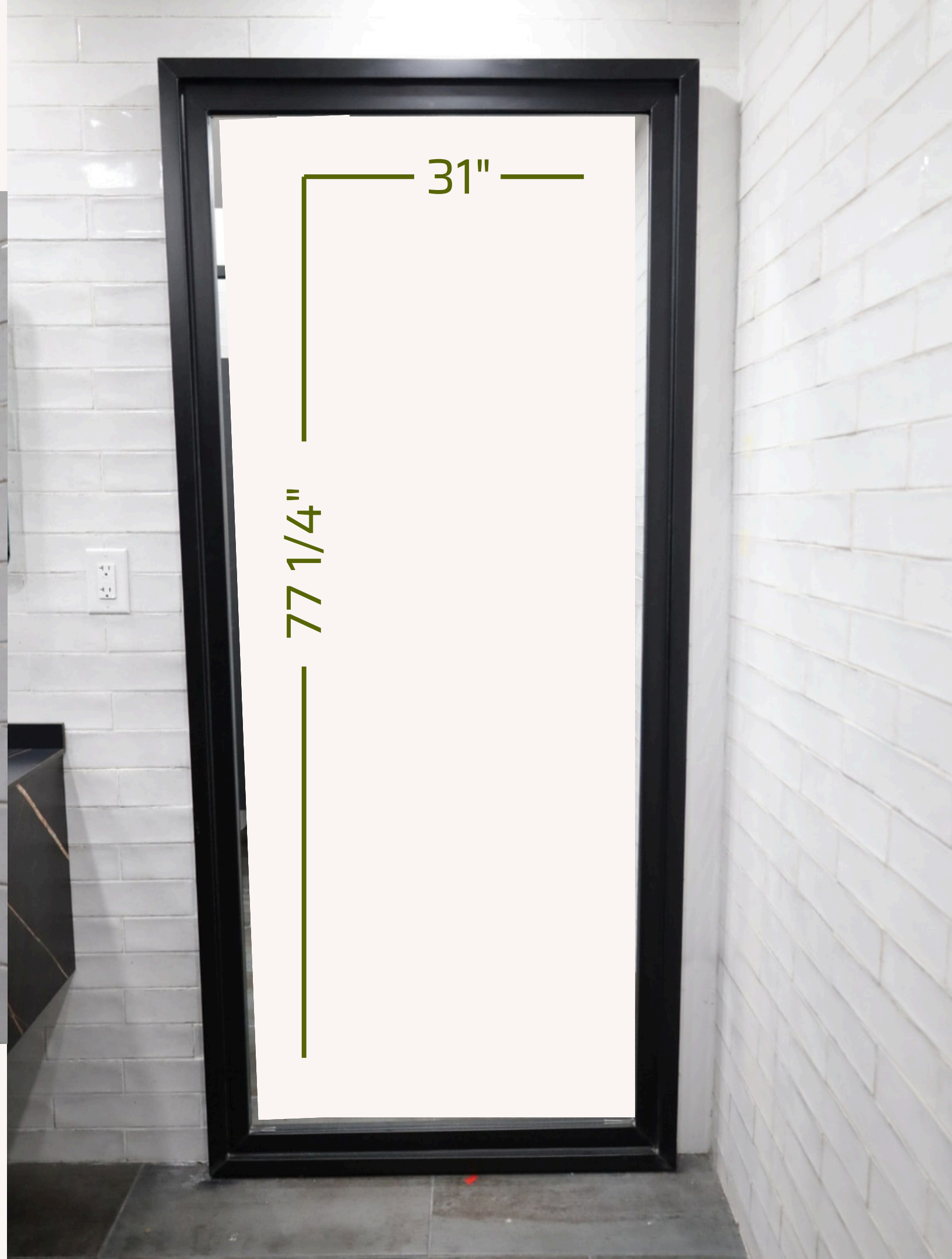


Quantity: 2

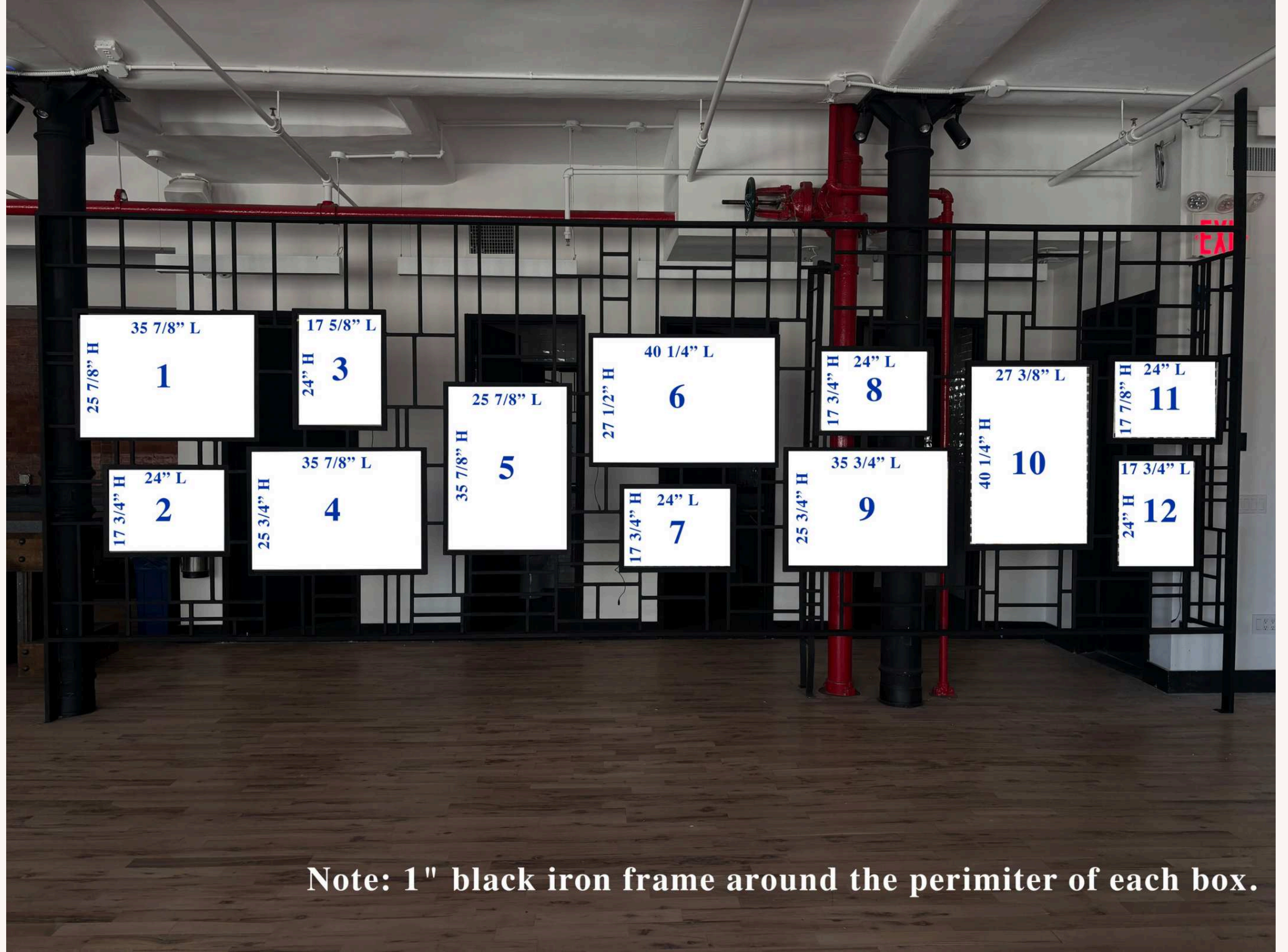


Quantity: 2





Privacy Wall



Note: 1" black iron frame around the perimeter of each box.

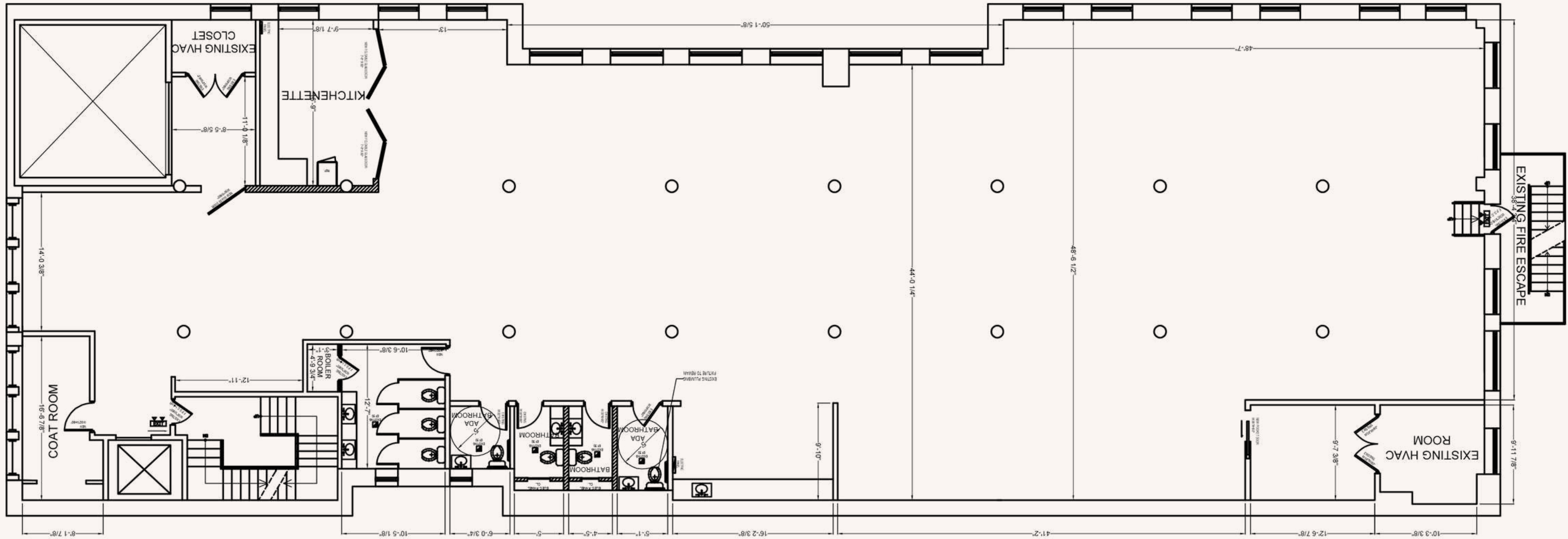




Glass Doors in Front of Penthouse







Floor plan - Loft 7

